

WTAMU Chamber Music Strings Camp

www.wtamu.edu/strings-camp.aspx



High School Viola Audition Material 2019

For Students entering grades 9-12 this upcoming fall

On Sunday afternoon, June 9, all campers will audition on this material for orchestral seating and, if not already in a pre-formed ensemble, for their placement in a chamber group. **Campers will also do a short bit of sight-reading.**

****NOTE****

You MUST play the advanced audition excerpt to be allowed to take the All-State prep elective class.

Required Viola:

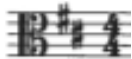
Excerpt I

Pachelbel Toccata: m.5-17; quarter=84

VIOLA

JOHANN PACHELBEL
Arranged by LLOYD CONLEY

Allegro ma non troppo ♩



5 *mf*

8

11 *legato* To Coda

14 *p*

15

17 *mf*

(More on next page)

Excerpt II

Saint-Saëns: m.161-181; quarter=92 accel. to 144

Begin →

162 *fff* *div.* *unis.* *accel. poco a poco* *molto accel.*

169 176 181

Excerpt III

Saint-Saëns: m.202-225; quarter=144

201 202 209 217 225 224

(More on next page)

Optional Advanced Viola:

*Required for those enrolled in All-State Etude Prep

Selected Etudes for Viola, Op. 36 Mazas (Lawrence Wheeler) Carl Fischer BF124

Page(s): 44-45

Etude Title: No. 47 - Staccato: Allegro Moderato

Tempo: Quarter Note = 76-88 (revised 5/2)

Staccato

Allegro moderato.

17

fz *fz >* *fz >* *fz >* *fz >* *fz >*